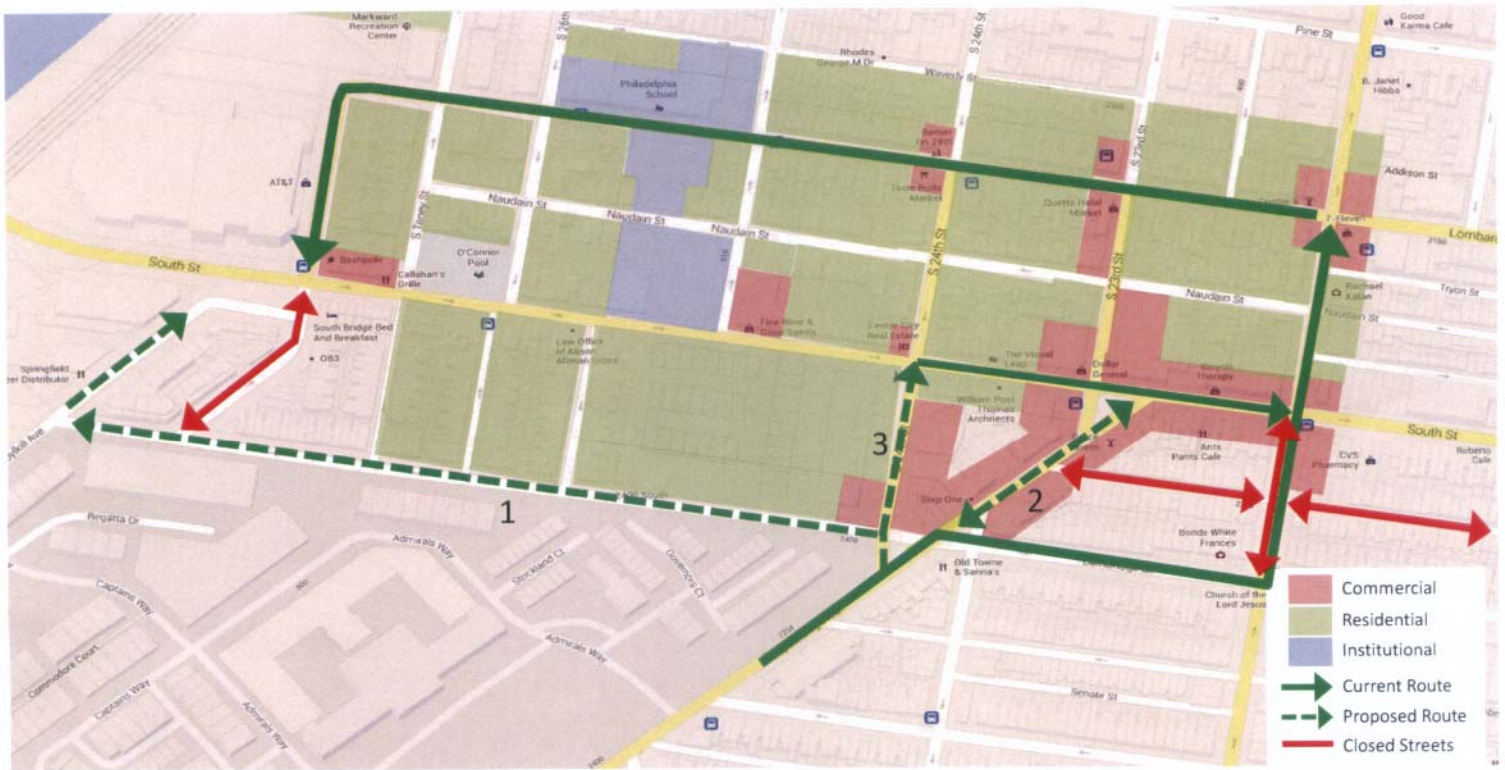


24th Street Neighbors' Proposed Options



Three proposed options:

1 Continue two-way traffic of Grays Ferry Avenue to South Street

- Gives drivers from Grays Ferry into the city a choice. Reduces traffic volume on each route
- Increases welcome traffic to the business area of South Street
- Avoids the confusing traffic situation on the intersection of Bainbridge Street and Grays Ferry Avenue
- Preserves the residential nature of 24th, Naudain, and Lombard Streets and the safety of school children

2 Reverse the direction of 24th Street traffic **ONLY to South Street** – same benefits as above plus:

- Avoids inevitable traffic jams at the confluent of three traffic streams on 24th and Lombard Streets
- Prevents Naudain Street from becoming a bypass when 24th and Lombard Streets are clogged
 - Impedes pedestrian crossings, especially by many school children

3 Reverse the direction of Bainbridge Street westward of Grays Ferry Avenue to Schuylkill Avenue (temporarily continued as two-way) and/or 27th Street (after completing repairs)

- Separates expressway traffic on Grays Ferry Avenue from traffic with business in center city
- Significantly reduces traffic volume in most residential neighborhoods, including on Lombard Street
- Decreases by 50% of the current route the distance from Grays Ferry Avenue to the South Street Bridge
- Shortens travel time by having to cross only 1 traffic light (at the bridge) as opposed to currently 8
- Is exceptionally safe: 80% of the route is walled on one side without pedestrian and bicycle crossings
- The street is wide enough to accommodate parking on both sides. The south side walk is available too
- Gives all residents south of South Street (between 23rd and exclusive of 27th Street) direct access to the South Street Bridge. While living near the bridge, residents can access it only via Lombard Street !