

Contents

CCStreetwise

Go to the Light: Simple Rules for a Postmodern City 1

President's Report

Seeing the Glass Half-Full 3

Town Square

CCRA Sponsored 2nd Councilmanic District Debate 4

City Controller Scheduled to Address CCRA Annual Meeting 5

Gun Violence: What Can Be Done and Who Needs to Do It 6

It's Academic

From Being an Ally to Changing the World 4

Greene Towne Montessori School Celebrates Earth Week 5

Out & About

CCRA Celebration of Center City Living Casino Night, May 9, at the Ethical Society 7

Dining Scene

Garces Benefit Raised over \$233,000 to Help Immigrant Restaurant Workers 9

Dining "Out" at Home in Peace and Quiet 9

Living History

An Update: The Short Story on Historic Preservation Right Now in Philadelphia 10

Zoning Plans for Rittenhouse Row 11

My Center City Rocked in the Sixties 17

Shop Talk

For a Rewarding Decluttering Experience, Find the Right Home for Each Item 15

CCRA Merchant Member Discount Program 19

What's Going On

CCRA Summer Calendar—Celebrate Summer in the City 19

CCCulture

Philadelphia Young Pianists' Academy: Creating a Summer Piano Festival 20

CENTER CITY RESIDENTS' ASSOCIATION

1900 Market Street, 8th Floor
Philadelphia, PA 19103
215-546-6719
centercity@centercityresidents.org
www.centercityresidents.org

CCStreetwise

Go to the Light: Simple Rules for a Postmodern City

By Bill West



Glass and steel.

Recently my wife and I took the train from New York, and we found ourselves standing in the great hall at 30th Street Station, and neither one of us felt like standing in the cab line.

So we walked across 30th Street and down the SEPTA rabbit hole. Intending to take the trolley, I managed to lead us down the stairs to the track for the Market-Frankford Line.

I have a habit of making wrong turns underground. I don't think I'm alone, but I've lived long enough to know that the occasional wrong turn can be an invitation to discovery. So we decided to take the MFL to 15th Street.

I'm glad we did. We got off at 15th Street right by the stairs that go up and east to Dilworth Park. Still standing on the platform, we looked

up the stairs and saw the light, reaching down from Dilworth Park, and beckoning to us (See top row, second from left.).

Here's a rule. When people are underground, show them where the light is. It makes them less anxious. And if you can cap it with a grand entrance into a truly fabulous public square, that would be nice.

The designers at Dilworth Park didn't invent the idea of orienting on light, and they didn't invent the grand entrance. But they pulled both ideas off, big-time.

Many Americans prefer to travel on ground level. Is this preference intrinsic to human nature, or is it simply the comfort

Continued p. 2

of the familiar, which opens up the possibility that people can be lured underground with good design and decent maintenance?

I hadn't reviewed my thinking about multi-level circulation around City Hall in a while, so I took a few walks and snapped a few pics. Overall, I'd say I have more good news than bad; also I just have news—things I hadn't thought about before.

Clothespin Forever!

Before the new entrances in Dilworth Park, I'm guessing everybody's favorite door to the underground was the one that wraps around Claes Oldenburg's *Clothespin*. (See P. 1, top row, far right.) It's a wonderful piece of sculpture, and the space fits it like a glove. It's basically a hexagonal pit with a staircase that hugs the perimeter; the bottom of the hexagon functions as a traffic roundabout, sending pedestrians off on various vectors. After the new guys across the street, the space at the foot of the *Clothespin* feels a bit cramped, but I may just have to get over it.

Across from the *Clothespin*, just north of Market, midway to JFK, lies another entrance that I find more problematic. To its credit, this is an older example of daylighting the trip upstairs. And there is an escalator.

But why is it here? The midblock location necessitates walking past convenient entrances at the corner of Market or JFK, and when you get downstairs you confront a T intersection. If you walk straight ahead you walk into a pretzel shop. To the left and right there's quite a lot of transit. There's decent signage, but still it's a midblock location. Don't get me wrong; it's functional. But it is a bit clunky.

Desire Lines

Over in Rittenhouse Square a few years back a new footpath was born. Originally a dirt path, it got quite muddy in the rain.

As Market Street West kept sprouting new office buildings, the number of people walking from the PATCO train on Locust Street through Rittenhouse Square increased—and, cutting the corner on 18th, wore a path in the grass between an east and north gate.

This is called a desire line. Eventually it was paved. Do the escalators over on 15th lie on anyone's desire line? It's doubtful.

So why are the escalators there? I think I know. They're part of several light boxes (or

light wells) that dot the neighborhood. These are big square holes in the ground, with glass walls that let light penetrate sideways into the concourse (there are three levels of pedestrian circulation in this area: ground level, concourse, and train platform).

This light is welcome, if insufficient. As I understand it, these boxes are remnants of Ed Bacon's proposal for this area, which was much more ambitious about connecting the ground level and the underground, both visually and physically.

Time for some history. The redevelopment of Penn Center, or Market Street West, came about when the Pennsylvania Railroad decided to demolish a railroad viaduct that ran through the area. And Ed Bacon decided to kibitz on the redevelopment plans. According to my old friend Ken Halpern, "Conceptually, Bacon thought that rather than just clear the site, the railroad should actually excavate to one level below ground. A sunken garden with flowers and fountains could then let light and air down to commuters using the subway, trolley, and commuter rail complex located below grade at this spot, later to be called Penn Center." Office towers would be oriented north-south to maximize light to the street and the lower level. (Kenneth Halpern, *Downtown USA*, 1978, p. 107.)

The railroad demurred: "The final solution for Penn Center placed the towers in the east-west direction, with a concrete deck instead of a sunken plaza. Bacon did manage to get the railroad to provide three sunken gardens." (Halpern, p. 107, caption 159.)

At any rate, the escalators are located in one of the light boxes, and another one has an elevator. Why not? The light boxes were already doomed to failure. Why not get some moving stairs and even an elevator in there and claim a victory for modern technology, if not for urban planning?

The Big Fail

The escalators aren't terrible. Here's what is. Readers of this space may recall a previous discussion of the underground entrance to the Love Park garage, a convenient underground connection between an 810-car parking garage and City Hall, the Municipal Services Building—basically the entire City Hall district. Say it's raining and you're late for lunch at the Bellevue. No problem. Take the concourse down South Broad to Walnut. Exit at the famous hotel's front door.

But the design and current physical state of this garage entrance leave something to be desired. It's not like the Love Park designers don't know how to do a garage entrance.

Further west are two newer buildings with interesting connections to the concourse. The Mellon Bank building, between Market and JFK along 18th Street, has a nice, understated doorway that connects to the Suburban Station concourse. A nondescript corridor links the door to the building elevators.

As you're walking to the elevators, to your left you will see a really pretty space. What is it for? (Photo, P. 1) The stairs do lead to doors that take you to the outside world. There doesn't seem to be a lot of through traffic.

I called the building manager, CBRE, and spoke with Tom Flach, who told me the space was originally intended to be a restaurant. That concept didn't gain traction, so now it's used periodically for tenant events. I told him how much I loved the structure, and he mentioned the child's toy K'NEX. I think he's right. I'm channeling my inner child when I gaze at this wonderful little glass house, homesteading among a gaggle of truly enormous office towers.

The entrance to the Comcast building, across the street, is similarly understated, but even before you enter you can see people at cafe tables in the food court. Upstairs from the food court, at ground level, is a large plaza in front of the building, populated by an outdoor cafe and lots of bicycle parking. Every time I go there it seems they've added more racks. In the expansive lobby hangs the famous 87-foot video wall that has become a significant tourist attraction.

As Inga Saffron wrote shortly before the building officially opened in 2008, "It's still early, but Comcast's plaza cafe and concourse mall promise to become a bustling urban nexus." And that's what happened.

But that's not all. The concourse mall leads to a broad, pleasant corridor all the way to Arch Street, where (gasp) there is a midblock crossing (installed in 2015) that takes you on a lovely midblock ramble through a plaza next to a large fountain and delivers you to Logan Square.

Recently a friend and I were exploring, and found the corridor that leads to the new Comcast building. It's open to the public

CCRA BOARD OF DIRECTORS

Maggie Mund	President
Donna Cordner	Executive Vice President
Philippa Campbell	Vice President
Dawn Willis	Vice President
Richard Gross	Secretary
Lauren O'Donnell	Assistant Secretary
Matthew Schreck	Treasurer
Charles Robin	Assistant Treasurer

DIRECTORS (term ending)

Guy Aiman (2020)	Ayanna Haskins (2021)
Michael Bowman (2020)	Daniel Keough (2019)
Elena Cappella (2019)	Lea Oxenhandler (2020)
Paula Cohen Buonomo (2020)	Nathaniel Parks (2021)
Jane Epstein (2020)	Robin Sweet (2021)
David Gerson (2019)	Max Tuttleman (2021)
Brett Goldman (2021)	Julie Wertheimer (2020)
Samuel Gordon (2019)	Benjamin Zuckerman (2020)
Barbara Halpern (2021)	

COMMUNICATIONS & OPERATIONS MANAGER

Travis W. Oliver

HOUSE TOUR CHAIR

Kathleen Federico

COUNSEL

Stanley R. Krakower

ZONING CO-CHAIRS (sit on Executive Committee)

Charles Loomis
Samuel Gordon

PAST PRESIDENTS (active)

Wade Albert	Eugene Dichter
Charles Goodwin	Samuel Weinberg
Jeff Braff	Wm. J. D. Jordan
Adam Schneider	Stephen Huntington
Vivian Seltzer	Lenore Millhollen
Pamela Rosser Thistle	Kristin Davidson
George R. Brodie, Jr.	

CENTER CITY QUARTERLY

Nancy Colman	EDITOR
Bonnie Eisenfeld	CONTRIBUTING EDITOR
Bill West.....	PRODUCTION EDITOR
Donna Strug, Andres Nicolini.....	PHOTOGRAPHERS

Cover Photo Credits: (1) : Bonnie Eisenfeld (2) Bill West
(3) Bonnie Eisenfeld (4) Bill West

Newsletter Ad Rates

4 Issues	Members	Non-Members
Full Page	\$ 1,350.00	\$1,425.00
½ Page	\$ 750.00	\$ 825.00
¼ Page	\$ 375.00	\$ 450.00
1 Issue	Members	Non-Members
Full Page	\$ 450.00	\$ 475.00
½ Page	\$ 250.00	\$ 275.00
¼ Page	\$ 125.00	\$ 150.00

For information and deadlines, please call 215-546-6719.

President's Report

Seeing the Glass Half-Full



Maggie Mund
CCRA President

I'm writing this before Casino Night with Governor Edward G. Rendell, and before our Annual Meeting with Rebecca Rhyhart, though by the time you read this, they will have already occurred. But I have faith that they both were spectacular, well attended and promoted the sense of community we all seek. Optimism can be in short supply sometimes, but seeing the glass half-full is good for the soul.

I have been president of CCRA for almost five months, and I have been very gratified by the offers of support I have received from our members. Several have written to the office and are now active on committees; some sent in memories of Governor Rendell to share; others occasionally scolding for things overlooked. But I have a pointed retort for complainers—sign up and volunteer. There is so much going on, with zoning and land-use issues, historic preservation, potholes, elections, property tax upheaval! It's hard to know where to start as the emails and phone calls come pouring in.

I have structured the Board into portfolios managed by VPs and committee heads tackling the issues of the day. Things happen quickly, and sometimes seem to demand immediate action. That is when I have to take a deep breath, relax, and think, *What is the best course of action here?* Who should be asked to answer this question? I'm not alone; CCRA is served by a great Board and they are a tremendous support and crucial to our moving forward.

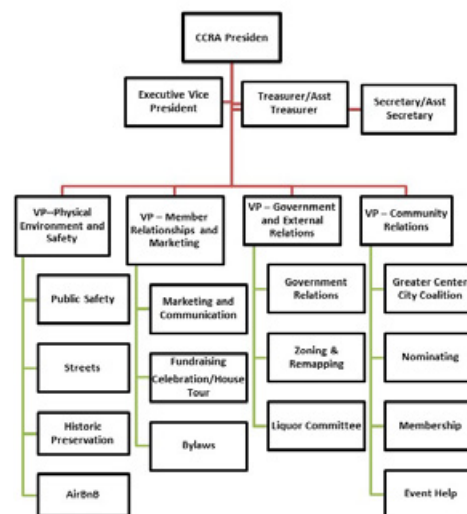
For years, I have thought that our geography was too big for one neighborhood association to cover. We cover all of Center City West, from the high-rise developments on Market, Chestnut and Walnut to

rowhouse neighborhoods south of Locust. If you think of comparable geography east of Broad Street, there are several RCOs (Registered Community Organizations)—Washington West, Society Hill, etc. I finally determined that our size and diversity are our strength, but we need to unite.

I have identified collaboration with other neighborhood groups as a priority for my presidency, believing firmly we are stronger together. This includes Friends organizations, business associations, schools and places of worship, to facilitate organizing around areas of civic interest that we might work on together. Ideally, collaborations will help us move mutual agendas forward, mobilize stakeholders, and/or increase our ability to influence a greater number of people. Possible issues include: trash, congestion, property taxes, public parks, homelessness, panhandling, and the built environment.

We have begun contacting some, but not all, of the organizations active in the area. If you are on the Board of such an organization, please reach out to CCRA. We welcome your input as we work to make the neighborhood even better.

CCRA Structure



Why whisper down the lane when you can shout it from the rooftops?

Center City Quarterly wants to hear from you.

Contribute an article. Share your pictures. Send us a letter.
Pitch an idea. Email centercity@centercityresidents.org, with CCQeditor in the subject line.



Continued from p. 2

and very nice, but long and serpentine. We asked a young man walking nearby if we were headed the right way; he said yes and made sure we got to the escalator to the lobby and a very nice coffee shop on the mezzanine. After you do this once, the navigation is easy. Another win, in my opinion, supplemented by yet another

midblock crossing on 18th if you prefer being outside.

So it does seem that we're getting better at this underground-circulation stuff. From Dilworth Park to the Comcast building, we have good examples of cutting-edge urban design. In between we have some older efforts that fall short. I'm hoping that

somewhere there is a constituency for going back and fixing some of the mistakes. I'd start with the underground door to the Love Park garage.

Remember the rules: use daylight to reduce anxiety and provide orientation; find the desire lines and use them; and build entrances that are an invitation and not a threat.

Town Square

CCRA Sponsored 2nd Councilmanic District Debate

With the May 21 Primary Election fast approaching, CCRA offered members a chance to learn about the candidates and hear their visions for the 2nd Councilmanic District, to help make informed decisions when voting.

It was a Standing Room Only crowd at Tenth Presbyterian Church for the debate between incumbent Kenyatta Johnson and challenger Lauren Vidas, Wednesday, April 3, 7 pm. Skillfully moderating, former CCRA President Jeff Braff posed 12 questions, ranging from the soda tax, tax abatement, DROP, councilmanic prerogative, term limits, row offices, and how to reduce poverty. Questions were answered, sometimes with surprising results. Heartfelt thanks to board members Chuck Goodwin, Ayanna Haskins, Nathaniel Parks and Dawn Willis for their efforts in making this happen, and to Tenth Presbyterian Church for hosting.



Center City 2nd District Council candidate Lauren Vidas and incumbent Kenyatta Johnson are flanked by CCRA President Maggie Mund and past President and moderator Jeff Braff

It's Academic

From Being an Ally to Changing the World

By Sanjana, Sixth Grader at The Philadelphia School

This past spring, six students from The Philadelphia School (TPS) had the opportunity to attend the Middle School Diversity Conference at the Haverford School. Our experience there was amazing.

We heard from the extraordinary speaker, Dr. Rodney Glasgow. He spoke to us about the conference's theme: kinship and friendship. We heard about how he was bullied in middle school, and how, when he himself was a bully, it taught him an important lesson. He told us about what it meant to be an ally, and shared stories of allies in his own life. We experienced his memories as if they were our own. Then he invited students up to tell their stories. We heard about how other kids were bullied by classmates and even teachers.

That was only the beginning though. The day that followed was just as moving. We gathered in groups and we discussed issues of diversity at our schools. It was interesting to hear about every person's experience. A lot of people shared how their school "brushed problems under the rug"; how they would ignore it when their students were being bullied; or how they are trying to make a change. It made me think how lucky I am to go to a school that talks about these issues and where every voice is heard.

We also heard from Homa Sabet Tavangar, who told us about global citizenship. She reminded us of our power to be an ally. She gave us a role model, Greta Thunberg, the 16-year-old climate-change activist. We talked



The Philadelphia School sixth grader, Sanjana.

about issues we were passionate about and how we could be like Greta.

We learned a lot, from being an ally to changing the world.

The Philadelphia School, located at 25th and Lombard Streets, educates children in preschool through 8th grade. For more information, please visit www.tpschool.org.

Greene Towne Montessori School Celebrates Earth Week

By Nicole Leapheart, Director of Communications and Marketing

Maria Montessori once said, “Children have an anxious concern for living beings, and the satisfaction of this instinct fills them with delight.” Children love to care for plants, animals, and each other. As an urban school named after Penn’s Greene Countrie Towne (a.k.a., Philadelphia) it has always been part of Greene Towne Montessori’s mission to create opportunities to satisfy these natural curiosities.

Every spring Greene Towners celebrate Earth Week by planting in our East location rooftop garden and at the West courtyard; setting up worm composting; and tending street trees. Even the toddlers get in on the action with age-appropriate planting activities. Parents are invited to help with all of the projects.

In small groups children discuss why trees and plants are so important to the earth. Throughout the week they hear how trees help us breathe and are home to many animals, punctuated by squeals of delight at finding worms.

“We get to do planting!” one child exclaims. Another chimes in, “We get to plant food and flowers!” Kindergarteners get out gloves and shovels to add fresh soil to the trees along Arch Street. The culmination of the week is when children take home a small container of soil with lettuce seeds to care for at home.



Nicole Leapheart

All Day Montessori students plant ferns in the courtyard container garden with teacher Brandon Och during Earth Week activities.

The Greene Towne community caps off Earth Week by choosing a park for community-service planting, weeding and mulching. For the past two years the school community has cared for Liberty Lands park, with a family park clean-up event.

Greene Towne Montessori School’s rooftop container garden was started in 2003. In 2012, the garden won First Prize in the Community Children’s Garden category of the Pennsylvania Horticultural Society’s City

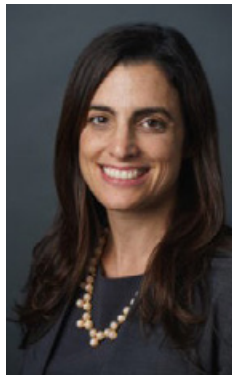
Gardens contest. All through the year children and staff tend the container gardens in both of the school’s campuses—located about a block apart in the Logan Square neighborhood—watering and sampling herbs and fruits.

Greene Towne Montessori School serves children 18 months old through Kindergarten and is accredited by the American Montessori Society and the Pennsylvania Association of Independent Schools. To learn more, visit www.gtms.org.

Town Square

City Controller Scheduled to Address CCRA Annual Meeting

CCRA’s planned Annual Meeting, at the Academy of Vocal Arts, 1920 Spruce Street on May 22, invited City Controller Rebecca Rhynhart to appear as this year’s featured guest speaker. The Annual Meeting affords an opportunity for Members to meet current board and staff, elect new Board and Executive Committee members, hear Rhynhart’s reflections after 18 months in office, and celebrate the beginning of summer with old and new friends, along with the light refreshments and wine.



CCCulture



Bonnie Eisenfeld

Rittenhouse Square sculpture gets a spring cleaning.

Gun Violence: What Can Be Done and Who Needs to Do It

By Bonnie Eisenfeld

On Thursday, May 2, a crowd gathered at the Philadelphia Ethical Society to hear a panel on “Gun Violence: What Can Be Done?” sponsored by Protect & Elect, a Philadelphia-based political action and education organization. The panelists discussed Philadelphia’s decades-long history of gun violence, as well as the more recent mass shootings around the U.S., and gave their perspectives on actions that are being taken and should be taken.

The tone of the meeting was informative and constructive in spite of the tragic theme. On that day, there were about 100 shootings in the city of Philadelphia, which is considered a normal day.

Moderator Shira Goodman, Executive Director of CeaseFirePA, introduced the speakers and discussed the political situation in Pennsylvania. Even though there are enough Pennsylvania legislators to get gun control laws passed, Republican committee chairmen refuse to bring gun control bills to a vote.

CeaseFirePA’s website shows candidates’ scores based on their voting record on gun violence prevention and a featured action for citizens to take now. Goodman’s message is simple: “Vote for candidates who support gun control legislation.” <https://www.ceasefirepa.org/>

Panelist Dorothy Johnson-Speight, Ph.D., Founder and National Executive Director of Mothers In Charge, whose mission is violence prevention and intervention through education, spoke about how her organization supports families when they lose a loved one to gun violence. Her son was murdered in 2001 in a dispute over a parking space. “The pain of that loss is with me every day,” she said. “You don’t get over it, you just get used to it.”

Panelist Erica J. Harris, M.D., Assistant Professor in the Department of Emergency Medicine at Einstein Healthcare Network, is also medical director of Einstein’s Trauma Intervention Program, whose mission is to prevent further violence by providing psychological support and social services to young adults who have been violently injured. <https://www.einstein.edu/trauma-and-critical-care/tip>



Sen. Sharif Street addresses the audience, as fellow panelists (from left) Erica Harris, MD, Dorothy Johnson-Speight, PhD, and moderator Shira Goodman listen.

Dr. Harris says violence spreads like an epidemic, as illustrated by maps of violent hotspots. Violence in neighborhoods and schools causes *chronic traumatic stress* among children exposed to it. The Centers for Disease Control conducts some research, but legislation supported by the NRA has stifled critical funding for ongoing research. Without such funding, research providing data-driven solutions to gun violence remains elusive.

Panelist Sharif Street, State Senator from Pennsylvania’s Third District in Philadelphia, and a leading advocate for better gun laws, spoke about his children and his North Philadelphia neighborhood. He said almost all the families in the neighborhood have a family member or friend who has been a victim of gun violence. Sen. Street emphasized the need for Pennsylvania voters to elect a Democratic majority in the next State Senate, so that critical gun control measures can actually be brought up for a vote. As long as the Senate remains under the current Republican leadership, there will be no chance of such laws coming up for a vote. <http://www.senatorsharifstreet.com/>

Legislative fixes are required on the state level. Cities can pass gun control laws but because of lawsuits brought by the NRA, municipal ordinances have been disallowed. Pennsylvania is known to be a source of cheap and plentiful guns, from which the majority of illegal guns in New York, New Jersey, Delaware, and Ohio flow, due to lax Pennsylvania gun laws.

Gun control is complicated and there is no one law that will solve all problems. Laws are needed to regulate what types of guns and ammunition may be purchased, and who can purchase them. But lesser known issues also need to be addressed. For example, currently guns can be purchased in quantity and then sold on the street with no permit. When these guns are traced to the original purchaser, he can simply tell the police the guns were lost or stolen. To help prevent this practice, a law is needed requiring the reporting of missing guns.

Two students from a local March for Our Lives chapter represented the student viewpoint focusing on school shootings. Schools now have practice drills for students so they will know what to do if a shooter is in the school. This organization, as well as others in the audience, works to register new voters so they can make their voices heard. <https://marchforourlives.com/>

Others in attendance at the forum included State Senator Vincent Hughes and newly elected State Representative Movita Johnson-Harrell, another strong antigun-violence advocate.

Protect and Elect’s mission is “to help elect candidates who represent and will protect our democratic values and are committed to making our country more equitable and inclusive.” For more information, please go to: www.protectelectphilly.com

CCRA Celebration of Center City Living Casino Night, May 9, at the Ethical Society

CCRA'S annual gala Celebration of Center City Living was held May 9 at the Ethical Society on Rittenhouse Square, and offered not only an unsurpassed array of raffle and auction prizes, but also an exciting new theme to engage its patrons—Casino Night, complete with an assortment of games of chance and professional croupiers.

Among the exceptional prizes offered:

- A night's stay at the FOUR SEASONS HOTEL at the Comcast Center, complete with breakfast and a \$200 gift certificate to Michelin-star-rated chef Jean-Georges Vongerichten's most exclusive restaurant atop the 59th Floor
- Two orchestra seats to a Philadelphia Orchestra concert, followed by a private backstage visit with renowned conductor Yannick Nézet Séguin
- Dinner for two at Lacroix, with wine pairings for each course. Join celebrated Executive Chef Jon Cichon at this acclaimed AAA Four Diamond Award restaurant, one of Rittenhouse Square's finest dining establishments, in the Rittenhouse Hotel
- A 60" LG Smart TV
- Talking Eagles with Gov. Rendell and Ray Diding, along with lunch at XIX at the Bellevue
- A Coach Mini Studs Black Leather Clutch Handbag

Even for those who don't gamble, attendees still had fun, with plenty to do and people to meet—including **Governor Edward G. Rendell**, this year's Lenora Berson Community Service Award honoree.

After 34 years of public service, 24 of them in elective office, Gov. Rendell remains active with many of the same causes and issues he was passionate about during his political career. Rendell served two terms as Governor of Pennsylvania (2003-2011), overseeing a budget of \$28.3 billion as Chief Executive of the nation's sixth-most populous state. As Governor, Rendell was committed to making government more responsible and responsive to the public's needs. His legislative agenda focused on commonsense political reform

and putting progress ahead of partisanship. Through his unprecedented strategic investments, he energized Pennsylvania's economy, revitalized communities, improved education, protected the environment, expanded access to health care for all children, and made affordable prescription drugs available to older Pennsylvanians.

During his two terms as Mayor of Philadelphia (1992-2000), Rendell eliminated a crippling deficit, balanced the City's budget, and generated five consecutive budget surpluses. Philadelphia's renaissance, which the *New York Times* called "the most stunning turnaround in recent urban history," is largely attributed to his determination, inspiration, and energy.

Before serving as Mayor, Rendell was elected District Attorney of Philadelphia for two terms from 1978 through 1985.

Governor Rendell penned his first book, *A Nation of Wusses: How America's Leaders Lost the Guts to Make Us Great* in 2012. With his trademark candor, Rendell chronicles his storied political career, while making a strong statement about the state of American leadership.

His commitment to making America a cleaner, more efficient place, and to fostering investment in our nation's crumbling infrastructure is as strong as ever.

Perhaps no other issue has been and continues to be as important to Gov. Rendell as America's dire need to rebuild and reinvest in its infrastructure. He helped create Building America's Future, an organization focused on the need for significant investment in infrastructure projects to ensure America's ongoing role as a global economic power. Gov. Rendell currently serves as Co-Chair of the organization, along with former New York mayor Michael Bloomberg and former U.S. Transportation Secretary Ray LaHood, and travels throughout the country speaking about infrastructure.

Gov. Rendell also served as Chairman of the Democratic National Committee during the 2000 Presidential election. He currently sits on several boards, supports



Governor Edward Rendell accepts the Lenora Berson Community Service Award from CCRA President Maggie Mund.

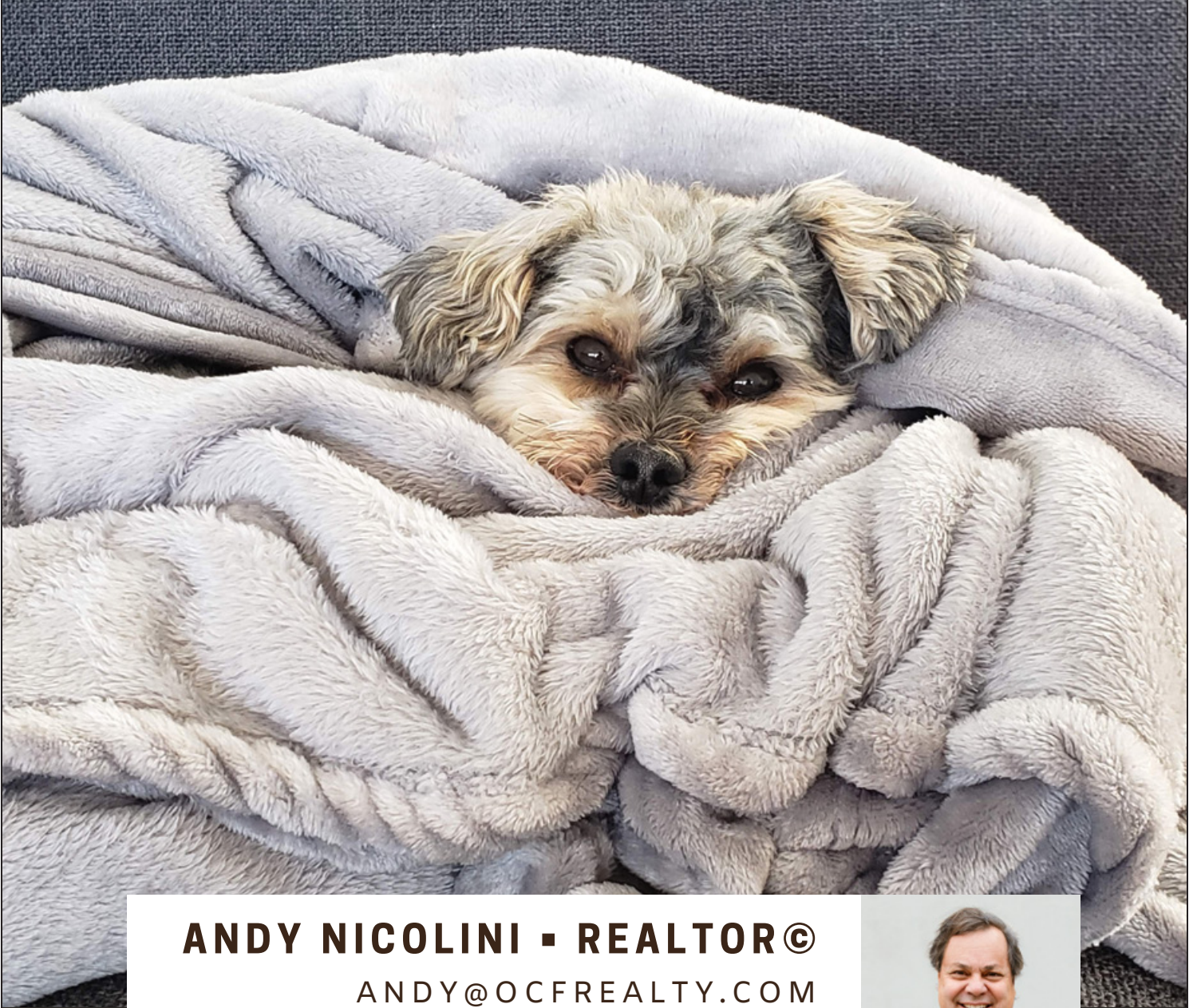
multiple nonprofit organizations, and teaches political science at his alma mater, the University of Pennsylvania. An Army veteran, he holds a B.A. from Penn and a J.D. from Villanova Law School.

LENORA BERSON COMMUNITY SERVICE AWARD
Lenora Berson (1928-2011) loved our Center City neighborhood, and worked tirelessly to improve it right up until her death at the age of 83. As President of CCRA from 1999 until 2001, she strategized about and led numerous CCRA activities, including opposition to the Crosstown Expressway, which had been proposed to run along South Street. Berson, who lived most of her life in this neighborhood, was "an impassioned advocate who could teach a class, do social work, organize testimony and demonstrations, write speeches, lobby elected officials, initiate candidacies for public office, mastermind election campaigns, write articles and books, take photographs worthy of being shown in art galleries, promote Philadelphia's hidden gems, and organize events to promote the city that no one else thought of," noted then-Representative Mark Cohen.

There are few who can match Lenora's energy and tenacity. The Award given in her name is intended to pay tribute to Lenora and to recognize others who have had a substantial positive impact on our neighborhood.

We would like to thank our Sponsors:
Lead: William Penn House; Platinum: Southern Land - The Laurel and Starr Restaurants; Gold: AT&T; Crumpet the Movie; Bronze: Boyds Philadelphia, City Fitness, Firstrust Bank, Pod Hotel, Schlesinger's, Robin Apartments; In-Kind: Di Bruno Bros., Veda, Little Red Fish.

THE BEST SEAT IN YOUR HOUSE BELONGS IN YOUR DREAM HOME



ANDY NICOLINI ■ REALTOR®

ANDY@OCFREALETY.COM

484.483.3114



OCF REALTY • WWW.OCFREALTY.COM
1936 WASHINGTON AVE PHILADELPHIA, PA 19146

Garces Benefit Raised over \$233,000 to Help Immigrant Restaurant Workers

By Bonnie Eisenfeld

On Friday, March 29, the Garces Foundation held its annual benefit at the Loew’s Philadelphia Hotel, 12th & Market Streets. Chef Jose Garces and other top Philadelphia chefs offered tasting plates for guests to enjoy, as well as wine, cocktails, and live and silent auctions. The Garces Foundation, a nonprofit organization founded by Chef Garces, restaurateur, and Dr. Beatriz Garces, owner of the Garces Dental Group, provides free English classes, workforce development, and health care for immigrants in the culinary field. Robin T. Morris, Executive Director of the Garces Foundation, thanks all those who supported the benefit. “Because of you, we provide a lifeline and springboard to the American dream.” <http://garcesfoundation.org/>



Jill Garces, Jose Garces, and Robin Morris (Executive Director, Garces Foundation)

Philip Gabriel

Dining “Out” at Home in Peace and Quiet

By Bonnie Eisenfeld

In case you were thinking that restaurant owners are becoming responsive to our complaints about loud noise, think again. One Saturday evening in the spring, Twenty Manning was so loud, the server did not hear my order correctly. I ordered mussels and I got Brussels!

One solution is to invite chefs at local restaurants to cook dinner for you at home. That is unlikely to happen unless a chef is your best friend. But wait—you can enjoy dinner prepared by your favorite restaurants and delivered to your home by Caviar and similar services.

For decades, we collected menus and called direct to order pizza or Chinese food. Now there are many online restaurant-delivery services, such as Caviar, GrubHub, Eat24, and UberEats, each with a variety of restaurant choices. To me, the best one is Caviar because many of my favorite restaurants are on that site. I have enjoyed meals from Parc, Zama, Suga, Estia, Twenty Manning, Gran Caffè L’Aquila, Trattoria Carina, Jane G’s, Dan Dan, Bar Bombon, and other fine restaurants, some of which are quite loud in person. In addition, Caviar offers other restaurant choices that

I’ve never heard of but might be inclined to try someday.

Here’s how it works: Go to TryCaviar.com and sign up with a credit card. Then enter your zip code. You can search by restaurant name or cuisine. Choose the restaurant you want, select your food, and place your order. Caviar will notify you four times: 1) when they have received your order; 2) when your food is being prepared; 3) when your order has been picked up; and 4) when your food is arriving. Caviar couriers bike around town so there are no parking problems, and they carry the food in orange insulated bags strapped on their backs so your food is delivered hot and ready to enjoy. The entire transaction including tip is charged to your credit card.

After your food has been delivered, you will get a request to rate your experience on a five-star scale. If your rating is less than five stars, you will be asked to comment on what could be improved. If you have questions or problems, you can contact the website by email and someone will answer you promptly to address your problem. Use the website www.trycaviar.com or get the app on your phone.



Photos by Bonnie Eisenfeld.

Korean-Americans paraded on Saturday, April 13, up 18th Street along Rittenhouse Square, in commemoration of the Centennial of the First Korean Congress. <https://www.firstkoreancongress.org/>

An Update : The Short Story on Historic Preservation Right Now in Philadelphia

By Pip Campbell, Chair, Historic Preservation Committee

Development pressures

For years, Philadelphia's efforts to preserve its historic resources were relatively stable, in part due to limited threats from new development projects. But all that changed during the last decade, as numerous projects were begun throughout the City, primarily in Center City, West Philadelphia, and Northern Liberties/Fishtown. As land once used for parking lots or garages disappeared, developers began to look for areas where large buildings such as the Frankford Chocolate Factory on Washington Avenue, churches, or industrial buildings could be demolished to provide large land parcels for development. Another strategy was to assemble smaller adjacent parcels where multiple properties could be cleared to create large lots. This development pressure forced legal demolition of many historic buildings that had not yet been considered for City historic designation, in many instances due to insufficient Philadelphia Historical Commission (PHC) resources.

Isn't development a good thing?

Maybe yes and maybe no. According to many people, development has thrived due to the benefits of the City's 10-year tax abatement, which allows huge tax reductions on new construction and incentivizes demolition. New housing units bring more residents to the City, creating bigger tax bases and consumer support for local businesses. But new development may bring unintended consequences like fewer parking spaces or increased traffic, and often compromises historic resources, replacing them with poorly designed structures that do not fit the neighborhood or streetscape. The Toll Brothers' 2015 Jewelers' Row project included demolition of row houses to build a multi-story residential tower with the potentially unintended consequence of significantly altering an historic street that was unique to Philadelphia.

Why does the Jewelers' Row development even matter? It is not in the CCRA footprint.

True, but take a walk down Sansom and Chestnut Streets west of Broad, where you find properties that are outside of the protected Rittenhouse-Fitler Historic



1520 Sansom Street

District (<https://www.phila.gov/historical/PDF/Ritt%20Fit%20Map.pdf>) and represent the same circumstances as those of Jewelers' Row—favorable zoning designations and historically unprotected resources. Somebody could decide to assemble properties and do a high-rise development on Sansom, for example, similar to what is proposed for Jewelers' Row.

So zoning designations and historic protections matter?

Both are important. Philadelphia's zoning code was revised in 2012 without much

attention to current historic resources and with an eye to a future city. An existing three-story row house might be zoned as CMX4 or CMX5, designations that allow for future high-rise buildings and do not represent the size or scale of the current property. Obtaining land through demolition works when properties are not historically designated and zoning allows for the potential project. If historic properties such as those on Jewelers' Row or on Sansom have not been designated as historic by the PHC, it is easier for the developer to obtain a demolition permit.

Continued p. 13

Zoning Plans for Rittenhouse Row

By Steve Huntington and Michael Schade

At its April meeting, CCRA’s Board voted to endorse Remapping Committee recommendations to preserve Rittenhouse Row, a vital commercial district, which lost specific height and massing controls when the zoning code was rewritten in 2012. The current zoning of CCRA’s most active and diverse blocks allows for massive and monolithic buildings where there is currently a diversity in heights, architectural style, and use.

The streetscapes of Chestnut, Walnut, and Sansom between 15th and 20th are an eclectic mix—midrise mid-century buildings adjacent to historic and modern low-rise shops and former townhouses converted to retail (see below).

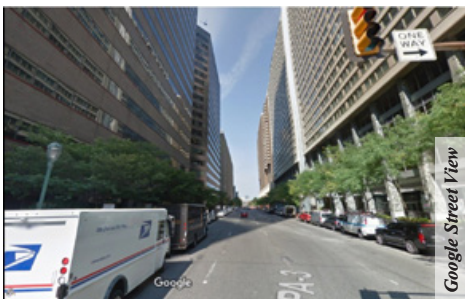


Tim Kerner



Tim Kerner

The lowrise/highrise – historic/modern blend could disappear under the current CMX 5 and CMX 4. CMX 5 is the zoning designation for some of Philadelphia’s least successful streets including portions of Market and Arch Sts., and JFK Blvd. (See below.)



Google Street View



Civic Design Review Committee

A preview (above and below) of the possible damage that the current zoning can do to a small-scale street is provided by the Jewelers’ Row development slated for the 800 block of Sansom, which, like Sansom between 15th and 19th, is zoned CMX 5.



AOS Architects

The current zoning controls create an incentive to assemble large parcels and develop buildings that will destroy the existing character of Rittenhouse Row. Here’s how Walnut Street could look with all lots built to the full allowable zoning envelope (see below).



AOS Architects

Density is not the only issue. Optional setback regulations on the south side of Chestnut and Walnut ensure “wedding cake” profiles, facilitating sunlit sidewalks, but no such protections are found on Sansom,

a much narrower, potentially darker, street. Moreover, the introduction of the “sky-plane” option has allowed developers to avoid lot-width controls, an oversight that gave rise to the block-long buildings on the 1900 block of JFK (below).



Tim Kerner

CCRA has requested four revisions to ensure the retention of the eclectic mix that characterizes Rittenhouse Row. The last three of these proposals have been endorsed by the Philadelphia City Planning Commission.

- **Zoning:** Change the CMX-5 classification within the area from the south side of Chestnut Street to the north side of Locust Street, between 15th and 19th Streets, to CMX-4. In addition, apply an overlay to this area and adjacent CMX-4 areas that limits the maximum bonuses for CMX-4 to 350 percent.
- **Lot-Width Protections:** Lot widths should be limited to 100 feet for corner parcels and 60 feet for midblock properties, the same restrictions that currently apply only to Walnut and the south side of Chestnut. This can be accomplished by adding maximum lot widths to the sky-plane provisions.
- **Lot-Width Protections for Sansom Street:** The lot-width and wedding-cake setback regulations applying to the south sides of Walnut and Chestnut should be extended to both sides of Sansom, a much narrower street. Further, the 320-foot height limitation on Sansom (approximately 26 stories), should be reduced.
- **Height and Setback Protections for Sansom Street:** (See criteria for Lot-Width Protections for Sansom).

We shall keep you updated as to the success of these efforts to preserve this key area of our neighborhood.



Greene Towne Montessori School



The Start to
a Lifetime of
Learning

Montessori Toddler, Preschool &
Kindergarten

—
Montessori Mornings
School Day Montessori
All-Day Montessori
Summer Camp

2121 ARCH STREET
CENTER CITY • PHILADELPHIA

gtms.org

ANNA CHANDRA PHOTOGRAPHY

**READING
TERMINAL
MARKET**

since
1893

12th & Arch Streets
Philadelphia, PA 19107

SHOP LOCAL
A PHILADELPHIA TRADITION

Take advantage of the fresh produce,
meats, dairy, seafood, spices & baked goods
that the Reading Terminal Market has to offer.

Best time for locals to shop:
8 - 11 AM & 4 - 6 PM

Diverse. Charming. Inspiring. Delicious.
Shop Reading Terminal Market. All under one roof.

215•922•2317 ♦ ReadingTerminalMarket.org ♦ Open Every Day 8 AM to 6 PM



RdgTerminalMkt

#LoveRTM

Wait—historically designated buildings may also be demolished? Aren't they protected?

They are protected but their designations do not prohibit developers or others from challenging the designation. An example right in our own neighborhood is Chestnut Street's Boyd Theater development. Even though the theater had been designated by the PHC, by pursuing a variety of steps and legal actions, ultimately the developer was permitted to retain only the front façade, with the remaining portions demolished to clear the land needed for the multi-story tower permitted by CMX zoning. In addition, the building on the corner of 19th and Chestnut, also historically designated, retained only its front and side façades, but was otherwise totally gutted to create a large retail space by combining the corner property with adjoining new construction. However, had either building not been historically designated, total demolition would have been possible. At least their historic designations resulted in saving some portion of the buildings' façades and external features.

If historic designation is not always enough, what is needed to protect historic structures? Recognizing the tensions between historic preservation and development, in April 2017, when demolition permits were being granted at the highest rate ever in Philadelphia, Mayor Kenney formed an Historic Preservation Task Force to identify challenges and ensure that the City could grow to meet the needs of its residents and businesses while still preserving its history. The *Inquirer's* Inga Saffron suggested in an April 2018 article that task forces are a strategy for not really addressing circumstances or, rather, to address them via a study. In March, nearly two years since the Task Force's creation, eight recommendations to help protect Philadelphia's historic resources were made public. Now the task becomes one of ensuring that the recommendations are publicized and implemented—a challenge in a city long noted for not always implementing the laws and guidance that already exist.

What are some of the Task Force recommendations?

- **Plan for Success** by integrating various City departments and



North side of Walnut at 16th.

activities, for example, creating a Policy Team of City employees or using zoning as a tool to support historic preservation. For City residents, these proposals could help reduce confusion about which City agency is responsible for what, and make it easier for citizens to contribute to preserving properties.

- **Clarify the Designation Process.** Many City residents are totally unclear about designation—which properties are designated and which features were those that resulted in designation. The Task Force recommended that designation criteria be established based on level of significance of the property, so that the process for designation becomes streamlined.
- **Activate Education and Outreach.** **This recommendation suggests ways of involving and educating the public in stewardship of historic resources.** Community members are often unaware of historic preservation until they read about it in the press or social media, or changes are proposed in their neighborhoods. Although the City and many local, state, and national organizations may have good online resources, they may not be easy to find or use to get definitive answers to questions. Task Force suggested activities providing hands-on experiences so that people could learn about the City's history and resources, and creating web and print materials to inform property owners about processes and procedures concerning historic preservation.

The five additional Task Force recommendations are:

- Create a historic resource inventory
- Modify historical commission processes
- Reduce historic building demolition and broaden neighborhood preservation
- Incentivize historic preservation
- Support archaeology

How can I learn more about the Task Force and historic preservation in Philadelphia?

Go to the Historic Preservation Task Force Website <https://www.phlpreservation.org/> to find the Task Force's executive summary, full report, and appendices, as well as other resources. To learn more about historic preservation activities and CCRA, contact the CCRA office at 215-546-6719 or centercity@centercityresidents.org by email, or email Pip Campbell, CCRA Historic Preservation Committee at pipcamp@aol.com.

Inga Saffron noted that “maintaining the eclectic rhythms and textures of Philadelphia's neighborhoods is crucial to maintaining our identity as a city.... Philadelphia, by sheer luck, has managed to retain its authenticity and unique appearance in a homogenizing world. No matter how many new projects go up here, the buildings from Philadelphia's past are the reason it has a future.” In whatever way, we must all be stewards of Philadelphia's history.



OPEN HOUSES

Tue., Sept. 25
8:45 a.m.
Grades Pre-K & K

Sat., Oct. 13
9:30 a.m.
Grades Pre-K - 12

IN THE CITY OF THE CITY

FRIENDS SELECT

Quaker Education for Students in Grades Pre-K through 12

FRIENDS SELECT SCHOOL 17th & Benjamin Franklin Parkway, Philadelphia, PA 19103 215.561.5900



Background Checked
 Trained & Insured

Care for Everyone

*Our supportive
 caregivers offer
 help at home,
 when you need
 it most.*



**We Offer: Alzheimer's & Dementia Care
 Companionship • Light Housekeeping
 Medication Reminders • Personal Care
 Errands & Shopping • Bathing Assistance
 Meal Preparation • Respite Care
 Daily Living Assistance**

Call for your FREE Care Assessment

267.499.4700

synergyhomecare.com/philadelphia

CCRA Past President



Sold

- 2410 Delancey
- 2413 Spruce
- 2133 Green
- 279 S 5th
- 113 Naudain
- 624 Kenilworth
- 1420 Locust
- 2330 Pine
- 304 Cypress
- 1919 Chestnut
- 1617 Lombard
- 2509 Pine
- 2330 St Albans
- 1702 Panama
- 1839 Addison
- 1134 Waverly
- 507 S 24th
- 1632 Bainbridge
- 506 Pine St
- 426 S Taney
- 925 S 2nd
- 609 Lombard
- 1932 Bainbridge
- 2609 Aspen St



Pam Rosser Thistle, REALTOR®
 BHHS Fox & Roach, REALTORS
 Cell/Text: 215-432-7790
 Office: 215-627-6005
 530 Walnut St, Suite 260
 Philadelphia, PA 19106
pam.thistle@foxroach.com



**BERKSHIRE
 HATHAWAY**
 HomeServices, Fox & Roach

For a Rewarding Decluttering Experience, Find the Right Home for Each Item

By Bonnie Eisenfeld

If you are not in a big hurry to clear out your place, I recommend taking the time to find the right home for each of your unwanted possessions to make your decluttering experience meaningful.

Too many books? New books with shiny covers can be donated to local library and jumble sales. However, you may have older books that have value to selected collectors. The solution is to find special book collections.

Recently, I donated an early edition of *The Second Sex* by Simone de Beauvoir to the University of Pennsylvania Library's women's studies collection. The librarian was happy to receive it. The same day I donated a book describing the investigation of the 1976 Legionnaires' disease epidemic in Philadelphia to the Historical Society of Pennsylvania, 1300 Locust Street, whose collection focuses mainly on the history of Philadelphia, Eastern Pennsylvania, and the greater Delaware Valley.

In all cases, you must contact the librarian in advance to find out if they want the book. Find libraries that sound appropriate; go on their website to find the appropriate contact person's name and address; send an email or letter describing your prospective donation. Once they agree to accept your donation, you can either take it there in person if it is a local place or send it by U.S. mail using book rate.

After you've exhausted all your ideas, the remaining books—excluding textbooks—can be donated to Book Corner, the Free Library store, 311 N 20th St (near Callowhill). Call for an appointment (215-567-0527), and they will help you unload the books. (I gave away old textbooks by posting them for free on Craig's List.)

Clothes or accessories that can be resold? Take them to Project HOME's Home Spun Retail Boutique, 1523 Fairmount Ave, 215-232-6322. This store is operated by a formerly homeless man who takes excellent care of the inventory and displays it beautifully. Friends who have donated high-quality women's and men's clothes felt good about leaving clothing and accessories there. Proceeds benefit Project HOME, a nonprofit organization with the mission of ending homelessness by providing affordable housing, employment opportunities, education, and health care.

If you have no way to personally deliver donations, get a free shipping label from Amazon on this website: <https://givebackbox.com/amazon> Pack resalable clothing, household goods, and other items listed on Goodwill's website <http://www.goodwill.org/donate-and-shop/donate-stuff/> into a shipping carton (remove all labels and markings from used carton) and give it to your mail carrier. It costs you absolutely nothing and you don't have to take it anywhere.

Worn-out clothes, sheets, or other textiles? These are items you would normally throw

in the trash. Thrift stores and jumble sales don't want them because they won't sell. Do not throw them away! Take them to an H&M clothing store where they will be used in a textile recycling program. A nearby H&M store is located at 1725 Walnut. Bag the textiles and drop them in the bin near the cash register. You will get a coupon for 10% off your next purchase. H&M wants to prevent textiles from taking up space in landfills, instead reusing textiles for other purposes. "In 2017, we collected more than 17,771 tons of textiles, the equivalent of 89 million T-shirts," H&M reports.

Nothing is wasted. Donate art supplies to the Village of Arts & Humanities. Donate tools to the West Philly Tool Library. Donate musical instruments to Rock to the Future. Donate cell phones to Cell Phones for Soldiers. Donate old theater playbills to the University of Pennsylvania's Kislak Center for Special Collections. Donate Yiddish books to the National Yiddish Book Center in Amherst, MA. Donate office supplies to just about any non-profit organization's office. These are just a few of the many places accepting special donations. You will find it worthwhile to take the time to do the research to find a new home for possessions you once treasured.

This article is a sequel to Bonnie's article "Too Much Stuff: Where to Sell or Donate Things You Don't Want," Center City Quarterly, Summer 2017.

Out & About

Uncle George Productions celebrated the completion of location filming of *Crumpet* by thanking the local community with free treats from food trucks on the corner of 22nd and Spruce Streets. Nothing says "Thank you" better than grilled cheese and cupcakes!



Donna Strug



Donna Strug



Philadelphia Gardens, Inc.

URBAN GARDEN DESIGN + INSTALLATION
 + CONTAINER GARDENS by Toni Ann Flanigan
 215.951.9193 // www.philadelphiagardens.com

First Baptist Church Philadelphia

Community Worship
 11:30AM, Sunday Mornings

All worship services are wheelchair accessible.

Free parking available on Sundays at One Liberty garage

*A 300-Year Ministry
 Moving into the Future:
 An Inspiring Encounter
 with God's Grace*

Rev. Dr. Quintin L. Robertson, Interim Pastor
 Michelle Cann, Director of Music
 An American Baptist Congregation
 Founded 1698



www.FirstBaptistPhiladelphia.org
 123 South 17th Street • Philadelphia, PA 19103
 215-563-3853

Our Greene Countrie Towne

A New Twist on an Old Favorite

Looking Ahead: the Annual CCRA Fall House & Garden Tour!

Join us for a new take on an old favorite: our CCRA Annual Fall House & Garden Tour. (Date TBA.)

This marks the 61st year of this annual event, with exciting new features:

Gardens, Food Trucks, Refreshments, Plant Sale and more!

CCRA is looking for homes, gardens and volunteer hosts.

Call 215-546-6719 or email centercity@centercityresidents.org



ADVERTISE IN THE CENTER CITY QUARTERLY

Your ad in the CCRA's Newsletter will reach your customers who live, shop and work in Center City Philadelphia. You will communicate directly with people about their community. The *Center City Quarterly* is published four times per year—September, December, March and June

For more information, please call 215-546-6719 or email centercity@centercityresidents.org

Newsletter Pages Are 8 1/2" x 11"		Non-Member Rate		CCRA Member Rate	
Size	Dimension	Four Issues	One Issue	Four Issues	One Issue
Full Page	8" w x 10.5" h	\$1,425.00	\$475.00	\$1,350.00	\$450.00
1/2 Page (horizontal)	8" w x 5" h	\$ 825.00	\$275.00	\$ 750.00	\$250.00
1/2 Page (vertical)	3.75" w x 10.5" h	\$ 825.00	\$275.00	\$ 750.00	\$250.00
1/4 Page (vertical)	3.75" w x 5" h	\$ 450.00	\$150.00	\$ 375.00	\$125.00

My Center City Rocked in the Sixties

By Bonnie Eisenfeld

When I tell people I have lived in Center City Philadelphia since the mid-sixties, they usually say, "Oh you must be so excited by all the wonderful changes since then." Yes, I love all the new restaurants now, and the truth is that I thought Center City was pretty great back then also.

We had a lively social scene, with Friday after-work happy hours and weekend apartment parties where people met each other in person and then phoned each other on landline telephones. There were no answering machines or voicemail; if we weren't home, the caller just tried again later. Dates resulted from friends' introductions (sometimes blind dates) and meeting people at work.

We had noteworthy traditional restaurants including two named Bookbinder's, each claiming to be the original; Arthur's, where tuxedoed waiters made fresh Caesar salad tableside; the Three Threes, housed in a rowhouse at 333 S. Smedley Street; the Happy Rooster with its French flavor; two Pubs serving London broil, baked potato, and a wedge of iceberg lettuce topped with Russian dressing; the Pub-Tiki, offering Polynesian ambience, wonton soup filled to brim with meat and vegetables, and a pu-pu platter of appetizers to share; and Da Vinci (gourmet Italian).

Musicians such as Dizzy Gillespie, Maynard Ferguson, and Lou Rawls performed at jazz clubs—Pep's and the Showboat. We had a choice of many movie theaters, the Theater Guild series of first-run plays at the Forrest, the Philadelphia Orchestra performing at the Academy of Music, and "little theater" at Plays and Players. On special occasions, we went to the Latin Casino nightclub at 13th and Walnut. Although most places frowned upon unescorted women sitting at the bar, a few places were known to attract singles: McGillin's Old Ale House (still there), the



Easter fashion show in Rittenhouse Square, 1969 – "Semifinalists for fashion excellence in the teen-age young lady group included two pants suits and twins in identical outfits in the Rittenhouse Square Easter Promenade. Pants suits are, judges decided, 'not really appropriate' for Easter Sunday," reads a contemporaneous caption.

Venture Inn, and the Bellevue Court. The Gilded Cage coffee house featured folk music performers and no alcohol.

We had authentic Jewish delis with interesting characters staffing the counter; Taylor's Country Store with a pianist performing during lunch; Kelly's on Mole Street (later the Oyster House); and Chinatown. On Sunday morning my friends and I would eat brunch at Day's Deli, 18th and Spruce. On a work day, we often ate a quick lunch at Woolworth's five-and-dime-store counter. We would shop for food at Great Scot (now Rittenhouse Market), and buy fresh tomatoes, corn, and cantaloupes from New Jersey farmers' trucks parked on the street.

On summer weekends, there was a mass exodus to the Jersey shore, and Center City seemed like a ghost town if you were unlucky enough to be left behind. For those not exiting the city, Fairmount Park offered live music at the Robin Hood Dell and theater-in-the-round at Playhouse in the Park.

We shopped in person for clothing and household items at four department stores:

Wanamaker's, Gimbels, Lit Brothers, and Strawbridge & Clothier. We would go from department to department, trying on, charging, and sending. Other retail stores included Peck & Peck, Bonwit Teller, Blum's, and the exclusive Nan Duskin for women; and Brooks Brothers (still open) and Jacob Reed for men. Each retail store had its own charge card, good only at that store. If we didn't pay our monthly bill on time, the store would close the account.

We received news through newspapers, radio, and network TV. At that time, Philadelphia had a second daily paper, *The Evening Bulletin*. We also had the weekly *Welcomat*, covering local news and the arts.

There were no ATMs so we had to cash checks at banks or supermarkets. If we ran out of money by Sunday when neither of those was open, we would amuse ourselves by going to the Art Museum and walking along Boathouse Row, or staying home listening to music on large vinyl platters played on turntables attached to multi-part stereo systems with huge speakers and reading the Sunday newspapers. Those were the good old days!

CCRA Business Members Directory

CCRA invites you to become a Business Member, and publicize your business or organization in our Business Members Directory, published in alternating issues of the Center City Quarterly, and weekly in the CCRA eNewsletter online. Updated listings are available anytime on the CCRA website. If you don't see a category for your business, we will create a new category for you.

To become a Business Member, to get your business listed in the Directory, to place an ad in the Center City Quarterly, or for more information, please go to www.centercityresidents.org.





Riverfront is a community of friends living cooperatively in an intergenerational building. Members reside in their own spacious condominiums, and share in private community spaces, where they enjoy weekly dinners, discussions, exercise, and entertainment.

To learn more about availability or to be on the Priority Wait List, contact us at info@friendscentercity.com or call 267-639-5257

Friends Center City – Riverfront
22 S. Front St. Phila., PA 19106
www.friendscentercity.com



**FITNESS
WORKS**

PERSONAL TRAINING

Private Studio or Onsite

Gian Costello

Certified Personal Trainer, ISSA
www.fitness-works.biz • 267-808-1522
giancostello@fitness-works.biz

**STRENGTH TRAINING
CARDIO • YOGA
WEIGHT LOSS
HEALTHY EATING
RITTENHOUSE AREA**



**OUR PROFESSIONAL
CAREGIVERS ARE READY
TO LEND A HAND.**

Home Helpers is Philadelphia's premier provider of non-medical and personal in-home care. We offer a full-range of elite caregiver services that include:

- Mobility care & fall prevention
- Personal hygiene
- Light housekeeping & personal laundry
- Medication reminders
- Alzheimer's/dementia care
- SafeEscort to and from appointments
- Meal preparation/dining assistance
- Companion care to include Hospital and Long-Term Care facility visits
- Direct Link Personal Response System
- And much more

We accept private pay, Long-Term Care Insurance and PCA Aging Waiver.

Call today for a FREE no-obligation needs assessment and let us start lending you a hand. Contact Patty Grace at (267) 402-7271 or email pgrace@homehelpersphilly.com.



Helping you to maintain your independence Providing you with peace of mind Convenient, with one number to call for all your service needs



Health, Home and Lifestyle Services

Exclusively for FitC Members
Email: info@friendscentercity.org
Call: 267-639-5257

CCRA Summer Calendar—Celebrate Summer in the City

Philly Beer Week

Friday, May 31 to Sunday, June 9
<http://www.phillylovesbeer.org/>

Rittenhouse Square Fine Art Show

Friday, June 7, 11 am – 7 pm
Saturday, June 8, 11 am – 6 pm
Sunday, June 9, 11 am – 5 pm
<http://www.rittenhousesquareart.com/>

Odunde Festival

23rd & South Streets
Sunday, June 9, 10 am – 8 pm
<https://www.odundefestival.org/>

Bloomsday

Readings from James Joyce's *Ulysses*
Rosenbach Museum & Library
2008 Delancey Place
Sunday, June 16, 11 am – 8 pm
<https://rosenbach.org/events/bloomsday-2019/>

5th Annual Sky-High Block Party

Co-sponsored by CCRA and LSNA
Pyramid Club, 1735 Market St., 52nd Fl.
Monday, June 17, 6 - 8 pm
<https://pyramid-club.ticketleap.com/5thannualskyhighblockparty-ccra/>
215-567-6510

Little Friends Festival

Rittenhouse Square
Wednesday, June 19, 5:30 – 7:30 pm
<http://friendsofrittenhouse.org/events/all/little-friends-festival/>

Ball on the Square

Rittenhouse Square
Thursday, June 20, 7 pm – midnight
<http://friendsofrittenhouse.org/events/all/ball-on-the-square/>

Young Friends Ball on the Square

Rittenhouse Square
Friday, June 21, 7:30 – 11:30 pm
<http://friendsofrittenhouse.org/events/all/young-friends-ball-on-the-square/>

Curtis Institute SummerFest

Young Artist Summer Program
Saturday, July 13 to Saturday, August 3
<https://www.curtis.edu/summerfest/young-artist-summer-program3/about/>

The Philadelphia Young Pianists' Academy and International Piano Competition

Academy of Vocal Arts, 1920 Spruce Street
Friday, August 2 to Sunday, August 11
<https://pypa.info/>

Schuylkill Banks RiverBoat Tours Cruises

Walnut Street Dock, east side of Schuylkill River
Beneath Walnut Street Bridge
Select Thursdays, Saturdays, and Sundays
from June through October
<https://www.schuylkillbanks.org/events/riverboat-tours-1>

Rittenhouse Square Fine Art Show

Friday, September 14, 11 am – 7 pm
Saturday, September 15, 11 am – 6 pm
Sunday, September 16, 11 am – 5 pm
<http://www.rittenhousesquareart.com/>

The School for Temporary Liveness

Presented by the University of the Arts
School of Dance
The Philadelphia Art Alliance at
University of the Arts
251 S. 18th Street
Wednesday, September 25 to
Wednesday, October 2
<https://www.uarts.edu/artalliance>

Schuylkill River Races and Regattas

Until end of November
<https://boathouserow.org/schuylkill-river-schedule/>

Architectural Tours

Preservation Alliance for Greater Philadelphia
<http://www.preservationalliance.com/what-we-do/architecture-walking-tours/>
Center for Architecture and Design
<https://www.philadelphiacfa.org/architecture-tours>

To get the latest news about events in Philadelphia, go to VisitPhilly at <https://www.visitphilly.com/>

To get the latest news about events in Center City, sign up for (IN) Center City, the e-newsletter of the Center City District: <http://www.centercityphila.org/incentercity/signup.php>

Shop Talk

CCRA Merchant Member Discount Program

Support our local merchants and save money too. These merchants will provide a discount (contact merchant for details) to any member who shows a current CCRA membership card and personal identification. Check weekly eNews for new listings and updates.

New Merchant Member!

Good Karma Cafe

331 S. 22nd St. (215-546-1479)
CCRA members get 5% discount; must show membership card. Good only at this location.)

Eye Candy Vision

218 S. 20th St. (215-568-3937)

Home Helpers Philly

1835 S. Broad St., Ste. 2 (215-334-2600)

Jason Matthew Salon

1735 Chestnut St., 2nd Fl (215-665-8030)

Koresh Dance Company

2002 Rittenhouse Sq. St. (267-687-1769)

Nature's Gallery Florist

2124 Walnut St. (215-563-5554)

NextMove Dance

Get \$10 off Dance Performances with your CCRA Membership. Members use promo code SAVE10.

Philly Foodworks

Use the code "CCRA" when signing up for home delivery and receive a \$20 discount on delivery charges.

Photo Lounge

1909 Chestnut St. (267-322-6651)

Twenty-Two Gallery

236 S. 22nd St., (215-772-1911)

Raven Lounge

1718 Sansom St. (215-840-3577)

Rim's Dry Cleaners & Tailors

2203 South St. (215-546-1889)

Rittenhouse Hardware

2001 Pine St. (215-735-6311)

Suga Restaurant

1720 Sansom St. (215-717-8968)

Ursula Hobson Fine Art Framing

1528 Waverly St. (215-546-7889)

Astral Artists – Use promo code "CCRA" to receive a \$10 flat rate on all tickets to their concerts.

Di Bruno Bros.

1730 Chestnut St.
(uses separate card, see info [online](#))

Dom's Shoe Repair

203 S. 20th St. (215-972-0098)

East West Acupuncture

419 S. 19th St. (415-758-1057)



DATES TO REMEMBER:

Monday, June 17, 6 - 8 pm

CCRA/LSNA Sky-High Block Party

LOOKING AHEAD

61st Annual CCRA Fall House & Garden Tour

(Date TBA)

CCCulture

Philadelphia Young Pianists' Academy: Creating a Summer Piano Festival

By Ching-Yun Hu, Concert Pianist and PYPA Artistic Director

One summer day in 2012, as I arrived back to Philadelphia from my concert tour, I wanted to attend a classical music concert and found none offered in the city. I had just founded and implemented a successful music festival in my native city of Taipei, and I thought: why not start something here in Philadelphia? With that thought in mind, I founded the Philadelphia Young Pianists' Academy (<https://pypa.info/>). Here we are in 2019, and PYPA Piano Festival is entering its seventh season this August!

For the first five years, PYPA took place at the Curtis Institute of Music. We grew and expanded, and beginning last summer, the festival has up taken residence at the Academy of Vocal Arts in Philadelphia.

The festival now runs 10 days, offering a dozen high-level concerts, more than 60 hours of master classes, several lectures about a music career, and the 3rd Annual Philadelphia International Piano Competition. The festival features prestigious concerts and invites the highest caliber of artists to perform and teach, such as Gary Graffman, Dang Thai Son, and Yekwon Sunwoo, just to name a few. This is our way of offering excellence in music to the community of Philadelphia and to aspiring young pianists on their way to a professional career in music.

What makes PYPA unique is that all the young pianists participating in the festival are carefully selected. We strive for quality over quantity. Because of the selective nature of PYPA, our entire



Courtesy Ching-Yun Hu

Concert pianist and PYPA Artistic Director Ching-Yun Hu.

festival staff and faculty can get to know each participant individually.

My goals with PYPA are to serve the audience in the Philadelphia music community; to support young aspiring pianists; and to offer them mentorships from highly respected professors, pianists, and music professionals. It's like a triangle, which cannot exist with one aspect missing. I am thrilled that PYPA can foster musical talent and classical music excellence. As a musician and music lover myself, this is truly a beautiful thing!